

# PVC Curtain Technical Information

## Specifying the perfect curtain

While our representative will normally measure up and specify the curtain for each application, the following information is a guide to the selection process.

### PVC MATERIAL TYPES

- S Standard** For all normal doors, curtains and welding screens.
- PU Polar/Food** For sub zero temperatures (minus 40°C) Contact with foodstuffs "Soft feel" pedestrian doors
- SR Flame retardant** For areas of high flame risk (*Tinted yellow for identification*)

### PVC COLOURS

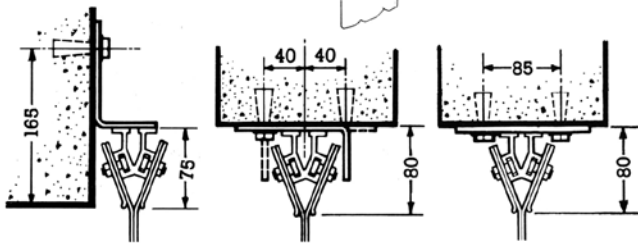
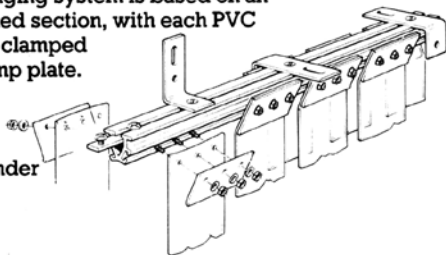
Stock colours: Clear, red, orange, *Welding strip*, green and bronze. **Any other colour** can be supplied to order.

### HANGING SYSTEMS

#### Aluminium twin-track:

This standard hanging system is based on an aluminium extruded section, with each PVC strip individually clamped with profiled clamp plate.

- Rapid erection
- Easy strip removal
- Can be used under sloping roofs.



**FIXING BEHIND LINTEL.**  
Specify: Type 15

**FIXING UNDER LINTEL**  
Specify: Type 11

**HEAVY DUTY**  
Specify: Type 11 Two Hole

### STRIP SIZE AND OVERLAP GUIDE

	Height (m)	Strip size	Overlap
<b>Zero draught exposure:</b>			
Welding screens	Up to 3	300 x 2	30mm
Thermal dividers			
Splash screens	Up to 7	400 x 2.5	Minimum
Dust screens			
Noise curtains	Up to 10	400 x 4	Maximum
<b>Moderate draught exposure:</b>			
Internal openings	Up to 2.75	200 x 2	Partial
Sheltered ext. openings			
Pedestrian doorways	Up to 5.45	300 x 3	Partial
	Up to 7.60	400 x 4	Partial
	Up to 9.14	400 x 4	Maximum
<b>Normal external exposure:</b>			
External doorways	Up to 4.57	300 x 3	Maximum
	Up to 7.60	400 x 4	Maximum
	Up to 9.14	Check with supplier	

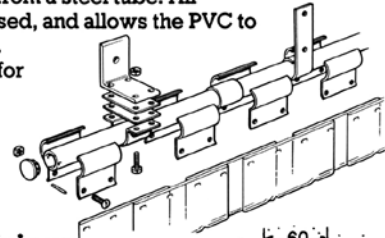
### STANDARD FEATURES

- Rounded edges on strip for extra safety
- Coloured side marker strips
- Installation service
- Made to measure hanging system
- Low-cost replacement strip service

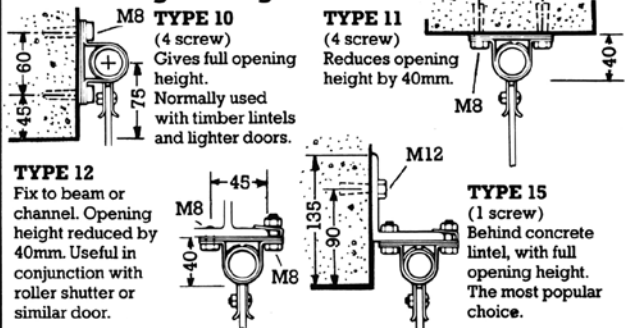
## Swivel hinge

This optional hanging system uses a series of half shell hinges to suspend the PVC from a steel tube. All components galvanised, and allows the PVC to swing when pushed.

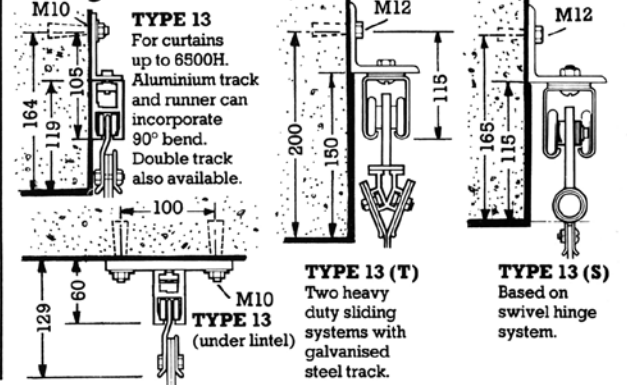
Recommended for installations where clearance between traffic and top of doorway is less than 600mm.



### Swivel Hinge Fixings

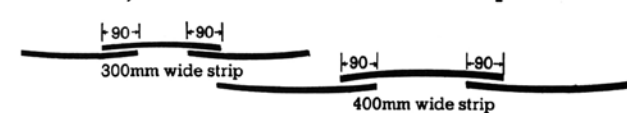


### Sliding Track

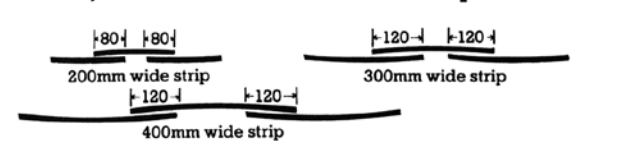


### OVERLAP CODING (Dimensions in mm)

**Minimum, Code 10. 60% on 300mm wide strip**



**Partial, Code 20. 80% on 300mm wide strip**



**Maximum, Code 40. 97% on 300mm wide strip**



### AVAILABLE FEATURES

- Sliding curtain, bi-parting on one or two tracks
- Hand chain or power operators
- Pedestrian "ways" of coloured, lighter strip in large curtains
- Noise enclosures or refuges